



SlimTouch Mini Keyboard



Model: AKB-410UB/UW



QuickGuide

English

①

LIMITED WARRANTY

ADESSO provides one year limited warranty for the quality of all its products in materials and workmanship.

During this period, ADESSO will repair or replace all merchandise, which proved to be defective. However, ADESSO will not warranty any product which has been subjected to improper freight Handling, shipping abuse, neglect or unauthorized repair or installation. The warranty also will not cover products installed with Non-ADESSO components and product with broken sealed and assembly trace. After replacement of RMA, ADESSO reserves the right to request the total cost of the replacement products with broken seals or assembly trace.

If you discover a defect, Adesso will, at its option, repair or replace the product at no charge to you, provided you return it during the warranty period with transportation charges pre-paid to Adesso. You must contact Adesso at support@adesso.com for a Return Merchandise Authorization number (RMA) prior to returning any product. For each product returned for warranty service, please include your name, shipping address (no P.O. Box), telephone number, copy of the bill of sale as proof of purchase and have the package clearly marked with your RMA number.

SUPPORT

We have listed most of our FAQ's (Frequently Asked Questions) at: <http://www.adesso.com/faqs.asp>. Please visit our FAQ Service & Support pages before you contact our E-mail or Telephone Support.

Email Support: If our FAQ's do not help you resolve your issues, please email support@adesso.com.

Telephone Support:
Toll Free: (800) 795-6788
9:00AM to 5:00PM PST Monday - Friday

②

INTRODUCTION

The Adesso Slim Touch Mini keyboard combines the control of an integrated touchpad with the features of a standard keyboard to provide a small, yet powerful input device. The touchpad includes a scrolling area for faster browsing. It's perfect for Slimline PCs, notebooks and limited space areas. This thin and compact keyboard was specifically developed for space saving applications.

FEATURES

- 88 Keys mini Keyboard layout
- Membrane key switch for quiet and easy typing
- Actual Dimension (Inches): 11.75" x 8.25" x 0.5"
- Touchpad Working Area (Inches): 2.25" x 1.75"
- LED Lights for NUM Lock, Caps Lock and Scroll Lock
- Approvals: FCC, CE and ROHS

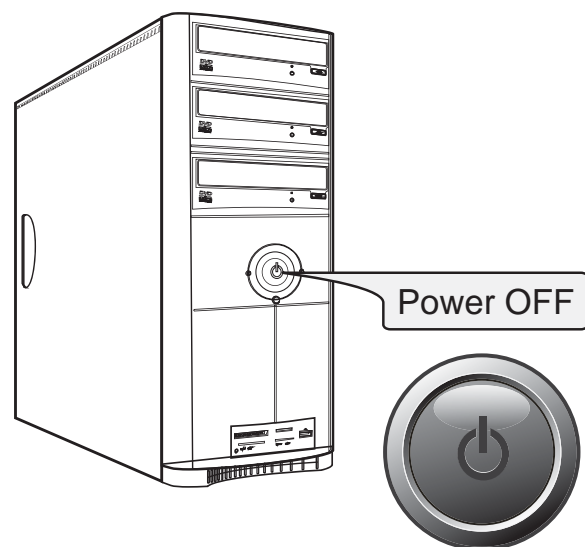
REQUIREMENTS

- Hardware: IBM, Pentium II class compatible or higher
- Operating system: Windows 7, Vista, XP and below
- Available USB or PS/2 port

③

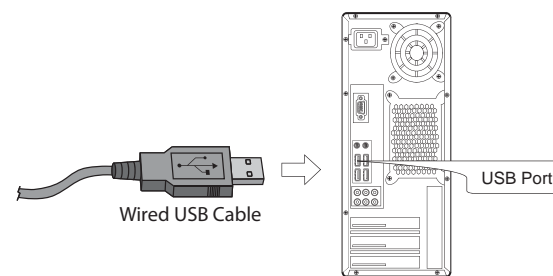
INSTALLATION

1. Make sure that your computer is turned OFF before installing this keyboard.

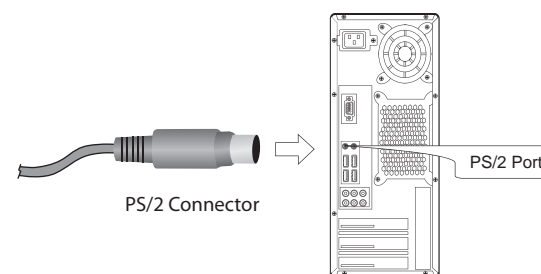


④

2. **FOR USB CONNECTION:**
Plug in the USB cable to the USB port.

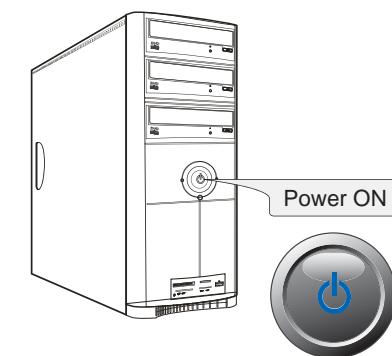


- FOR PS/2 CONNECTION:**
Plug in the PS/2 cable to the PS/2 port.



⑤

3. Turn On your computer and your operating system will detect the device automatically. This device is plug and play, no driver required.



NOTE:

Advance touchpad driver for Windows 7/Vista/XP/2000 users

- For optional advanced features of your touchpad, such as Horizontal Scrolling, Zoom In/Out, and Back, Forward functions, please download the driver from our drivers section:

<http://www.adesso.com/drivers/GlidePoint.zip>

⑥

V2.0 123109